



PRICE LIST FOR B / CS TX

✦ Labor/Birth Only \$1,350

Full Birth Support \$2,150

Postpartum-
Daytime \$35/Hr.

Lactation Session \$85

Partner Guidance
Session \$85

Birth Planning
Session \$55/Hr.

✦ www.gentlelovedoula.com



CONT.

PRICE LIST FOR B / CS TX

Birth Pool Only

\$100

Full Pool Rental

\$385

Trauma/Emotional

Healing w/ Guided Meditation

\$175

Birth Story Processing

\$55/hr.

New Doula Mentorship

\$55/hr.

www.gentlelovedoula.com



WHAT IS INCLUDED WITH EACH SERVICE?



Full Birth Support: \$2,150	Labor-Birth Only Support: \$1,350
Prenatal Visits (3 Visits): We'll have three comprehensive prenatal visits. These sessions cover birth preparation, comfort measures, coping strategies, and any specific concerns you may have.	Prenatal Visits (1 Visit): During the prenatal visit, we'll discuss your birth preferences, answer any questions you have, and create a personalized birth plan. This visit helps us get to know each other better and ensures that I understand your unique needs.
Postnatal Visit (2 Visit): Similar to the labor-birth only package, I'll visit you after birth to provide support and address any postpartum needs.	Postnatal Visit (1 Visit): After the birth, I'll visit you to provide emotional support, answer questions about postpartum recovery, and assist with any breastfeeding or newborn care concerns.
Birth Plan Template and Guidance: Together, we'll create a detailed birth plan that reflects your preferences. I'll guide you through the process and ensure your wishes are communicated effectively.	On-Call Support (Starting at 38 Weeks): From 38 weeks onward, I'll be available 24/7 to support you during labor. Whether you need advice over the phone or in-person assistance, I'll be there.
On-Call Support (Starting at 38 Weeks): As with the previous package, I'll be on-call from 38 weeks onward, ready to assist you during labor.	Unlimited Phone/Text Support: Throughout your pregnancy and early labor, you can reach out to me anytime via phone or text. I'll provide guidance, reassurance, and encouragement.
Unlimited Phone/Text Support (Throughout Pregnancy and Up to 4 Weeks Postpartum): You can reach out to me anytime during your entire pregnancy journey. I'll be there to listen, provide information, and offer encouragement.	Post-Birth Support (Up to 2 Hours): After your baby arrives, I'll stay with you for up to 2 hours. I'll help with initial breastfeeding, offer emotional support, and ensure you're comfortable.
Free Partner Guidance Session	





Postpartum Support

Postpartum Support: Daytime

Rate: \$35/hour

Package Options (with Discounts):

Package A: 6 Weeks of Support
2 days per week (4 hours per visit)

Total hours: 48

Package Price: \$1,596
(Includes a 5% discount)

Package B: 6 Weeks of Support
3 days per week (4 hours per visit)

Total hours: 72

Package Price: \$2,318
(Includes a 8% discount)

Package C: 8 Weeks of Support
3 days per week (4 hours per visit)

Total hours: 96

Package Price: \$3,024
(Includes a 10% discount)

[Click here for overnight
postpartum support](#)

Birth Pool Rentals

Pool Only Rental:

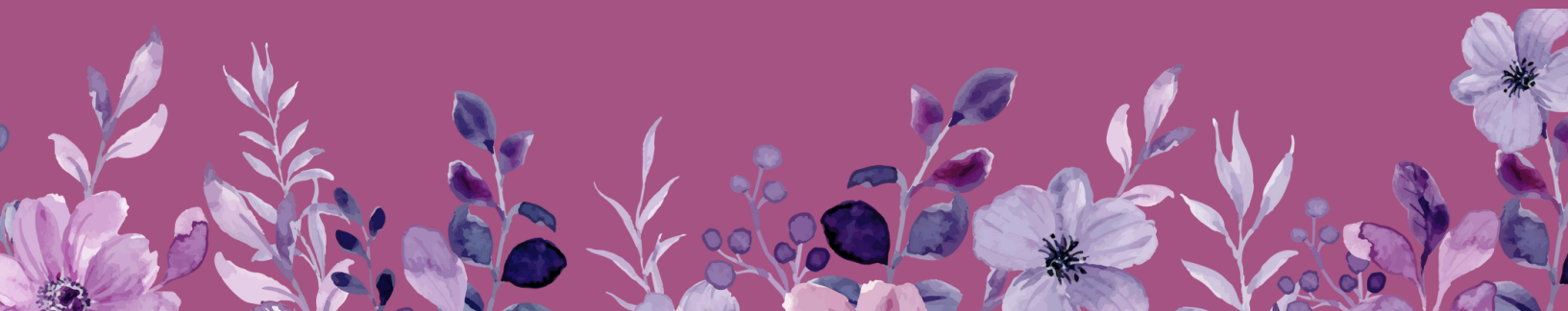
Rate: \$100

This rental includes a large inflatable birth pool and an air pump, along with setup and takedown instructions. Please note that you are responsible for providing all other necessary items for pool use (e.g., liner, sump pump). A separate list of required items will be provided.

Full-Service Pool Rental:

Rate: \$385

Enjoy a comfortable home birth with our convenient birth pool service covering setup, water filling, post-birth cleanup, a hygienic one-time use liner, and all necessary hardware. Travel is included within Bryan/College Station and Robertson County. A \$50 fee applies for locations more than a 35-minute drive outside these areas.





Payment Options



Full Birth Support Only: Payment Plan:

Pay the retainer upfront (\$650).

Choose between 3 installments (\$500) or 5 installments (\$300).

All payments must be completed by 36 weeks.

Labor Only- Payment Plan:

Pay Retainer (\$650) Due upfront and non refundable

pay remaining balance in two (2) installments of \$350 each

all payments must be completed by 36 weeks.

Sliding Scale:

Let's discuss your budget.

We may have availability to work within your set budget.

Insurance:

We do not bill insurances directly.

Accept FSA/HSA payments.

Check with your insurance provider about doula coverage and HSA/FSA debit card options.

Reimbursement option: We provide an itemized invoice for private reimbursement after paying in full.

Gift Cards:

Add gift cards to your registry for celebrations.

Friends and family can contribute to pay for our services.

After pay:

Learn more about how it works here.

<https://www.afterpay.com/en-US/how-it-works>

Feel free to reach out to schedule a consultation and discuss your options!





PRICE LIST FOR VIRTUAL SERVICES

Partner Guidance \$85

Trauma & Emotional Healing
Through Guided Meditation \$175

Birth Processing
Session \$55/Hr.

Birth Planing
Session \$55/hr

Lactation Session \$85

Big Sister
Mentorship \$55/hr.

www.gentlelovedoula.com



Virtual Services



Lactation Support session: \$85 per session but we also welcome "Pay What You Can" contributions.

Each session is up to an hour

Partner Guidance Session : \$85 per session

Trauma/Emotional Healing through guided meditation:

A 2-hour session is \$175, but we also welcome "Pay What You Can" contributions.

Birth Planning Session : 1-2 hours per session, Birth template: \$55/hr.

Birth Processing Session: \$55

Big Sister Doula Mentorship Program -

\$55/per session

Each session is up to 1 hour

Package 1: Nurturing Beginnings Package - \$200

- 4 sessions per month
- Unlimited Chat Support
- Basic Business Strategies and Resources

Package 2: Heartfelt Growth Mentorship Package - \$400

- 8 sessions per month
- Unlimited Monthly Chat Support
- On call for support for your time with birth clients.

Package 3: Radiant Mastery Package - \$600

- 12 sessions per month
- Unlimited Chat Support
- Customized Business Planning and Growth Strategies
- Peer Networking Opportunities





Placenta Services



Placenta Processing Options

Capsules OR Chocolates: \$275

Prep Placenta for burial: \$175

Prep Placenta for smoothies: \$175

Mama Bear Package: \$375

- Choice between Capsules or Chocolates
- (1) Placenta Print
- (1) 4 oz. Tincture (this lasts forever)
- (1) 2 oz. Placenta Salve

Add On Options: Can only be added on with one of the processing options.

- Half Capsules/Half Chocolate : \$55

You can have your placenta processed in half capsules and half chocolates.

- (1) 4 oz. Tincture : \$55

- (1) 2 oz. Placenta Salve: \$35

- (1) Placenta Print : \$25

- Photoshoot of placenta: \$45
 - includes: (3 digital photos & your choice of real or artificial flowers)

- (1) Placenta Smoothie Immediate postpartum: \$75
 - Includes(Frozen fruit pack, and I provide all supplies and tools to prep, Clean and disinfect afterwards)

- Twin placenta Processing : \$175 (this is an additional cost if there are two placentas needing processing or prepped.)

